

DIGESTER GAS CONTROL



MODEL 8800A
Vent-to-Atmosphere

MODEL 8820A
Pipe Away

Pressure Relief and Vacuum Breaker Valve w/Flame Arrestor

- Protection for the digester containing flammable gases.
- Arrestor design with spiral wound, crimped ribbon element and removable flame bank.
- Wafer design of arrestor provides easy accessibility to flame bank.
- Factory Mutual approved flame arrestor.



MODEL 8200
Roof Manhole Cover

- Non-sparking and gas-tight to meet insurance requirements.
- Provides quick and easy access.
- Uniform surface seating.
- Limited maintenance required.



MODEL 6100
Sample and Gauge Hatch

- Assures uniform seating.
- Incorporates a positive cover lockdown to assure a tight seal.
- Special Groth "air cushion" gasketed seating.



MODEL 8330
Sediment Trap

- Removes excess water and sediment.
- Quick and easy cleaning is facilitated by removing top cover.
- Available with flanged connections as standard.
- Drip trap and sight glass attach quickly.



MODEL 8600
Foam Separator

- Eliminates foam.
- Removes particles.
- Continuous water spray systems.
- High and low level alarms.



MODEL 7628 - Horizontal
MODEL 7618 - Vertical
Flame Arrestors

- Unit designed for quick and easy cleaning and maintenance.
- Protects the system from externally caused sources of heat and ignition for increased fire protection and safety.
- Factory Mutual approved flame arrestor.

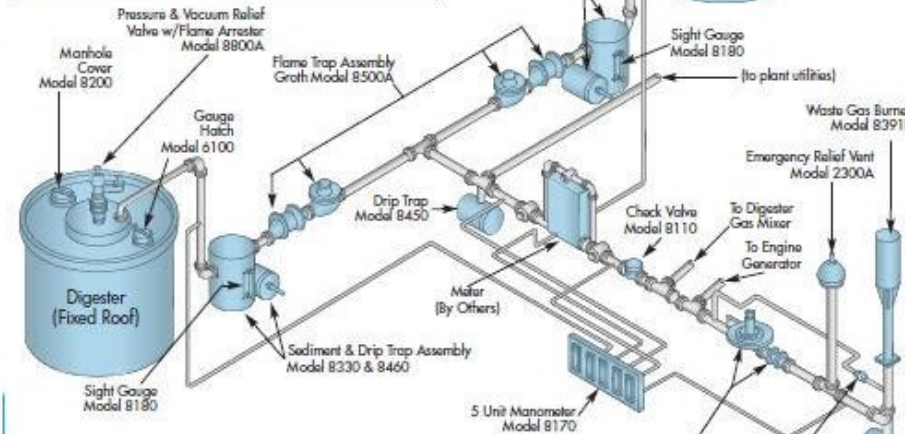


MODEL 8500A
Flame Trap Assembly

- Unit composed of horizontal flame arrester and thermal operated shut-off valve.
- Valve has low temperature fusible type element which shuts off flow in the event of flame.
- Element may be replaced without disassembly of valve.
- Unit protects against flame propagation into upstream piping.
- Factory Mutual approved flame arrestor.

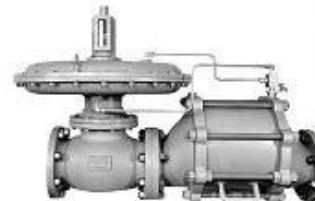
TYPICAL FLOW AND INSTALLATION DIAGRAM SHOWING A MULTIPLE DIGESTER GAS SYSTEM

The schematic is for general presentation only and is not intended to represent a specific design.



MODEL 8450 - Automatic
MODEL 8460 - Manual
MODEL 8490 - Electrically Actuated
Drip Traps

- Provides safe removal of liquids from the low point in gas control line.
- Designed for quick opening and maintenance. Easily attached to Groth sediment trap for extra efficiency.



MODEL 8400A
Pressure Relief and Flame Trap Assembly

- Unit composed of flame arrester and single port back pressure regulator with a thermal shut-off control valve.
- Factory Mutual approved flame arrestor.
- Visual indicator allows easy pressure setting adjustments.
- Designed for quick and simple cleaning, replacement of parts and maintenance.



MODEL 2300A
Pressure Relief Vent

- Corrosion resistant construction.
- Groth's self-closing air cushion pallet with center stabilizing stem and peripheral guidance provides uniform seating and alignment.



MODEL 8391B
Waste Gas Burners

- Engineered to burn all waste gas even when flow is variable.
- Igniters are available as fully automatic or manual.
- Weatherhood and vortex vanes virtually eliminate flame blow-out in high winds.



MODEL 8170
Manometer

- Solid acrylic assembly with shatter-proof tube and scale protect against dust, dirt and rain.
- Any number of tubes may be mounted side by side.
- Long lasting and designed for easy cleaning and maintenance.



MODEL 8110
Back Pressure Check Valve

- Allows full flow with low working pressure.
- Easy maintenance by quickly removing cover and replacing pallet.
- Corrosion resistant construction.
- Flanged connection standard.



MODEL 7622
Flame Checks

- Easy disassembly to replace or clean screens.
- High flow capacity.
- Element of 304 SS or 316 SS perforated plates provide minimum pressure drop and still prevent flashbacks in pilot lines.